

Draw No. AA/F9564

Rev. D

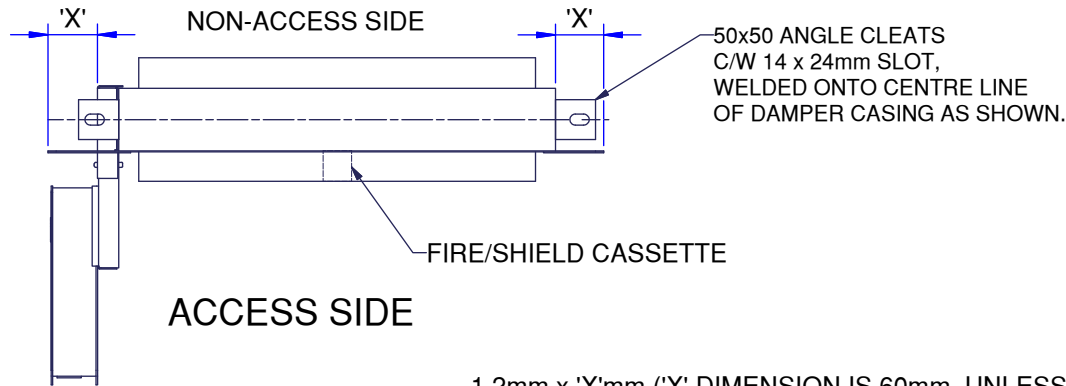
DIMENSIONS IN MILLIMETRES

DO NOT SCALE



actionair

© RUSKIN AIR MANAGEMENT LIMITED
 South Street, Whitstable
 Kent CT5 3DU
 Telephone: 01227 276100
 Facsimile: 01227 264262
 www.actionair.co.uk



FIRE SHIELD;
 'S' DIMENSION VARIES
 MAINTAINING 'X' mm
 ALL ROUND TO THE REAR

1" TOP = 10mm (± 2mm)

2" TOP = 35mm (± 2mm)

3" TOP = 60mm (± 2mm)

4" TOP = 85mm (± 2mm)

PTC DAMPERS HAVE 2" TOPS

NOTES:
 PLEASE SPECIFY X & Z DIMENSIONS AT ORDER ENTRY LEVEL.

FOR GALVANISED DAMPERS USE CSNN01768 M/STEEL ANGLE CLEATS
 FOR 430 & 316 ST' STEEL DAMPERS USE CUNN02614 316 ST' STEEL ANGLE CLEATS

SIDE FLANGES, JOGGLE FOLDED EACH END, FURTHER FIXED TO TOP AND BOTTOM FLANGES, BY MEANS OF SELF PIERCING RIVETS.

ALL FLANGE TO DAMPER CASING WELDS. MUST BE 6-10mm STITCH WELDS, IN EACH CORNER, 125mm (MAX) CENTERS, ON FRONT ONLY.

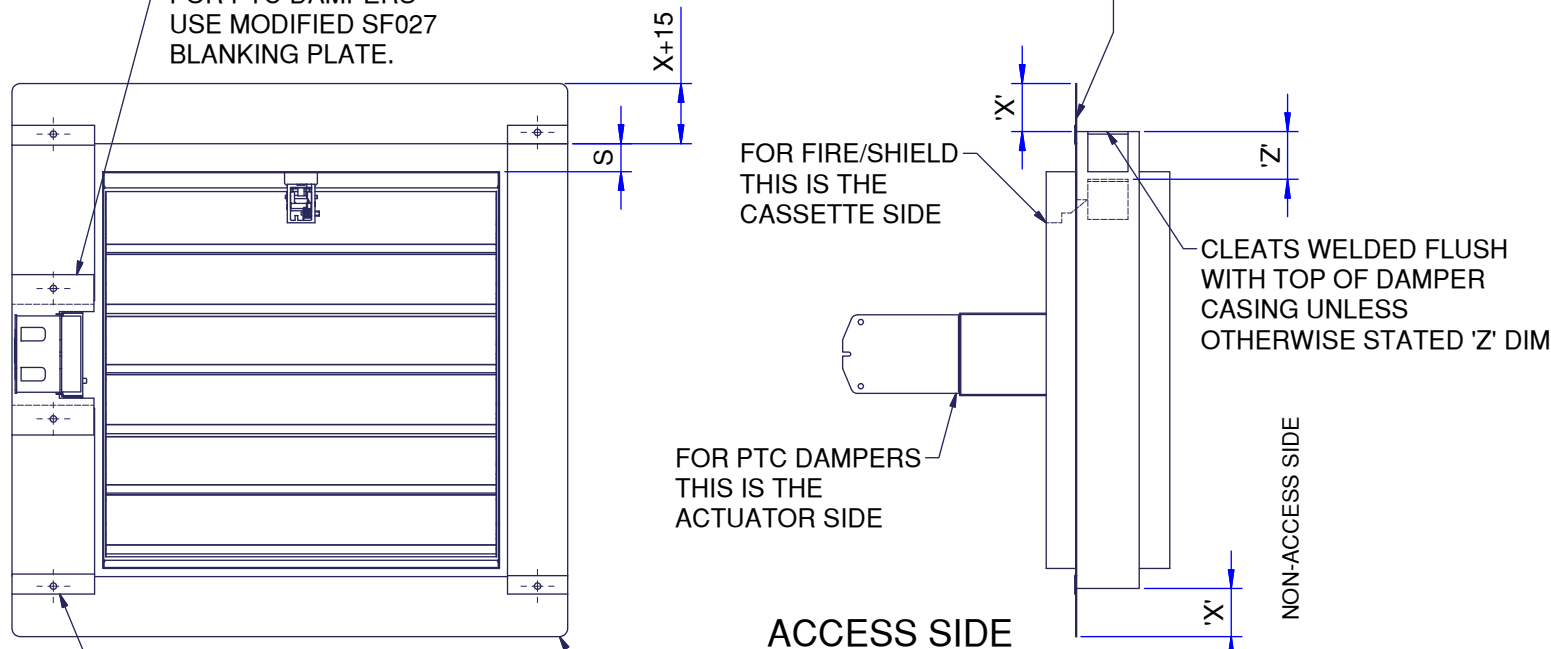
FOR PTC "NON-ACCESS" FLANGE REFER TO DRAWING AA/F 10187
 FOR FIRE SHIELD "NON-ACCESS SIDE" FLANGE PLEASE REFER TO DRAWING AA/F10369

FOR TESTED INSTALLATION METHOD REFER TO DRAWINGS SF029 & SF030.

THIS METHOD WOULD BE SUBJECT TO THE SCRUTINY AND APPROVAL FROM THE RELEVANT DISTRICT SURVEYOR / LOCAL AUTHORITY PRIOR TO ORDERING. THIS DRAWING IS NOT INTENDED TO ENDORSE THE ARRANGEMENT AS BEING SUITABLE FOR IT'S INTENDED APPLICATION. THE INFORMATION SHOWN IS SUBJECT TO CHANGE WITHOUT NOTICE DUE TO CONTINUING RESEARCH AND DEVELOPMENT.

1.2mm x 'X' mm ('X' DIMENSION IS 60mm, UNLESS OTHERWISE STATED) FLANGE TO DAMPER CASING WELDS MUST BE 6-10mm STITCH WELDS, IN EACH CORNER, 125mm (MAX) CENTERS, ON FRONT ONLY.

FOR PTC DAMPERS USE MODIFIED SF027 BLANKING PLATE.



FOR FIRE/SHIELD THIS IS THE CASSETTE SIDE

FOR PTC DAMPERS THIS IS THE ACTUATOR SIDE

CLEATS WELDED FLUSH WITH TOP OF DAMPER CASING UNLESS OTHERWISE STATED 'Z' DIM

GALVANISED FLANGES FIXED TOGETHER USING SINGLE SELF PIERCING RIVET RSZN00003, 4 PLCS. ST' STEEL TO BE WELDED

10mm RADIUS 4 PLCS

Rev	Change	Dates
D	FLANGE CONSTRUCTION	11/05/2009
C	UPDATED AND CONSOLIDATED TO FLANGE ACCESS SIDE	17/07/2008
B	NEW CLEAT ADDED	06/12/2005
Drawn by S.W.		11/03/2008
Checked by H.T.		04/08/2009
Approved by M.B.		05/08/2009
Customer		
Project		

Description
 G.A. FOR 1.2mm GAUGE FLANGE & CLEATS
ACCESS SIDE

Drawing No. AA/F9564
 Revision D