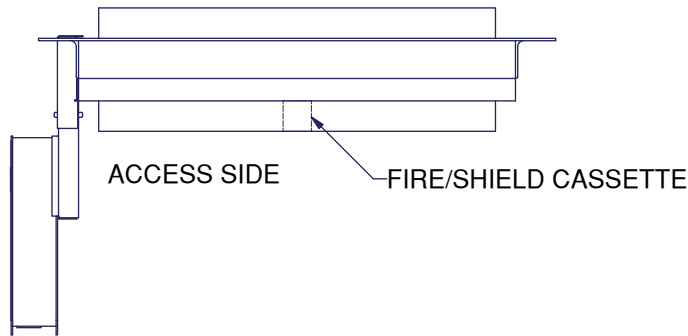


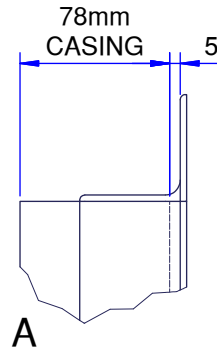


NON-ACCESS SIDE

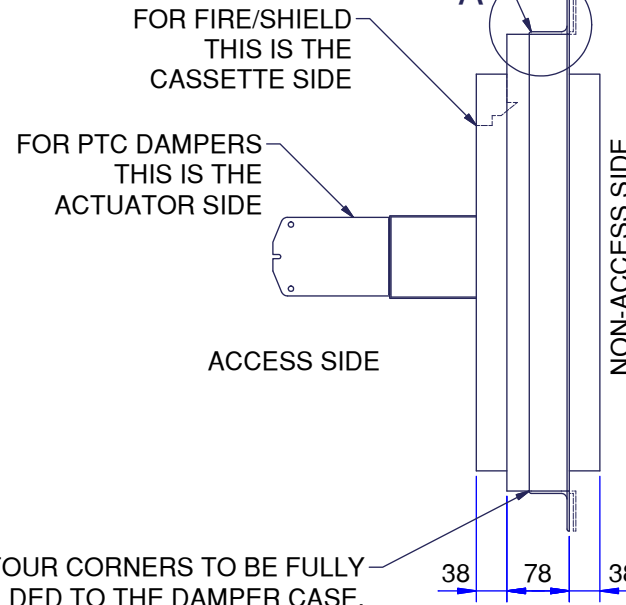
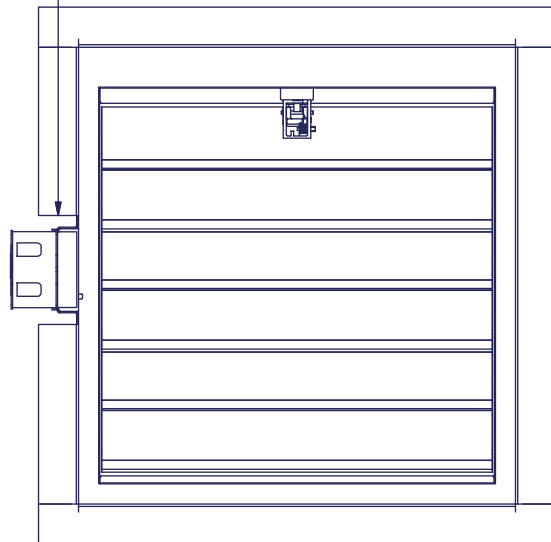


FOR FIRE/SHIELD DAMPERS, WELD FLANGE FLUSH TO NON ACCESS SIDE CASING.
 FOR PTC DAMPERS, WELD FLANGE OFFSET 'Y'
 ('Y' DIMENSION IS 5mm (MINIMUM) UNLESS OTHERWISE STATED).

50mm x 50mm, ANGLE FLANGE TO BE TACK WELDED TO THE DAMPER OUTER CASING (50mm MAX FROM ENDS & 150mm CTRS) ON ALL FOUR SIDES.



FOR PTC DAMPERS ONLY;
 ANGLE FLANGE TO STOP SHORT, EITHER SIDE OF THE INTERFACE SHROUD, AS SHOWN.
 BLANKING OFF LOCAL TO INTERFACE SHROUD IS REQUIRED, ON SITE BY OTHERS.



ALL FOUR CORNERS TO BE FULLY WELDED TO THE DAMPER CASE.

NOTES:

FOR GALVANISED DAMPER CASINGS, THE ANGLE FLANGE WILL BE CONSTRUCTED FROM 3mm THICK MILD STEEL.
 FOR 430 & 316 STAINLESS STEEL DAMPER CASINGS, THE ANGLE FLANGE WILL BE CONSTRUCTED FROM 2mm THICK 316 STAINLESS STEEL.

FOR FLANGE TO "ACCESS SIDE" PLEASE REFER TO DRAWING AA/F7169

FOR TESTED INSTALLATION METHOD REFER TO DRAWINGS SF029 & SF030.

THIS METHOD WOULD BE SUBJECT TO THE SCRUTINY AND APPROVAL FROM THE RELEVANT DISTRICT SURVEYOR / LOCAL AUTHORITY PRIOR TO ORDERING.
 THIS DRAWING IS NOT INTENDED TO ENDORSE THE ARRANGEMENT AS BEING SUITABLE FOR IT'S INTENDED APPLICATION.

THE INFORMATION SHOWN IS SUBJECT TO CHANGE WITHOUT NOTICE DUE TO CONTINUING RESEARCH AND DEVELOPMENT.

Rev	Change	Dates
C	316 ST' ST' SPEC ADDED	18/05/2009
B	VARIOUS S.W.	13/04/2006
A	WELD FLANGE OFFSET ALTERED	13/10/2004
Drawn by S.W.		11/10/2000
Checked by H.T.		04/08/2009
Approved by M.B.		05/08/2009
Customer		
Project		

Description G.A. FOR 50X50 ANGLE FLANGE NON-ACCESS SIDE	
Drawing No. AA/F7168	Revision C