

Damper - Vertical for fitting to the outside of a concrete/blockwork wall - (SS + Top and bottom flange)

Health and safety

This process must be undertaken by competent persons. More than one person may be required to ensure the safe handling of large dampers and other materials.

Use must be made of access equipment to ensure unsafe practices are not used to approach walls or difficult access areas.

Standard site PPE should be used (minimum steel toe cap boots, hard hat); together with any protective eyewear, gloves and masks, when drilling or cutting is being undertaken. The latter should also be used when handling the wall construction materials, as defined by the material suppliers. If loud equipment is being used, hearing protection should be used.

All waste materials should be collected and disposed of as defined by the relevant supplier.

Damper installation method

- 1) Drill the top and bottom flanges of the damper with 3 off 11 mm dia. holes, one each approximately 50mm from each end and one on the centre line.
- 2) Offer the damper up to the hole and pass 10mm studding through these holes to allow the unit to be clamped to the wall using a 40 x 40 channel section also suitably drilled at the same centres. This channel should exceed the hole width by approximately 500mm and should be equally spaced across the penetration.
- 3) The casing of the damper should then be further protected with a 50mm layer of mineral/stone wool, covered with a steel "Z-angle", fixed back to the damper spigot or the duct.
- 4) Any gaps on the other side should be filled with mineral/stone wool down to the damper spigots and be protected with intumescent paint.

Actuator fitting

- 1) The control mode/actuator should then be fitted using the instructions supplied with it.
- 2) Using the supplied drilling template, drill into the ductwork and fit the Electrical Thermal Release (ETR) into the duct (as good practice, this should be towards the top of the duct)
- 3) A special feature of the Actionair SmokeShield modes is that they may be adjusted from pointing straight out along the duct (standard configuration) through 90° to point either up or down if required.
- 4) The mode should be wired into the system using the site wiring detail, plus the details shown on the label.

Note: If the mode/actuator fitting instructions are missing, please contact the Actionair sales office for a new copy.

Commissioning

The procedure detailed under periodic maintenance should be followed

Periodic maintenance

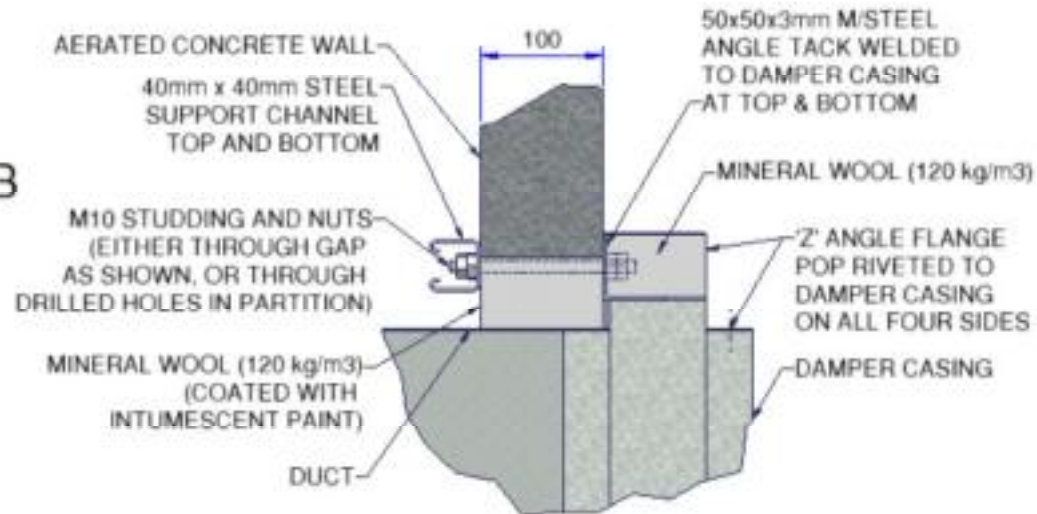
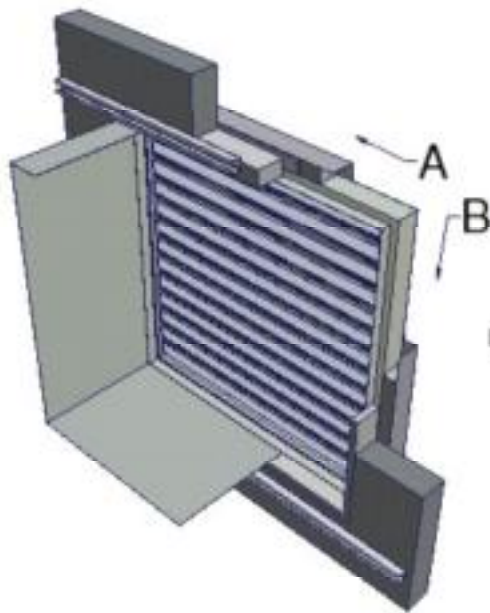
As detailed in BS 5588-12

- 1) For dampers this is generally at least once per year for units with spring operation.
- 2) Units operating in dust laden atmospheres, should be checked more often to suit the severity of the system
- 3) Units associated with systems may be required to be checked, as part of the system, as often as once per week or month to ensure ongoing confidence in the life safety system. This may be seen as analogous to fire alarm systems.

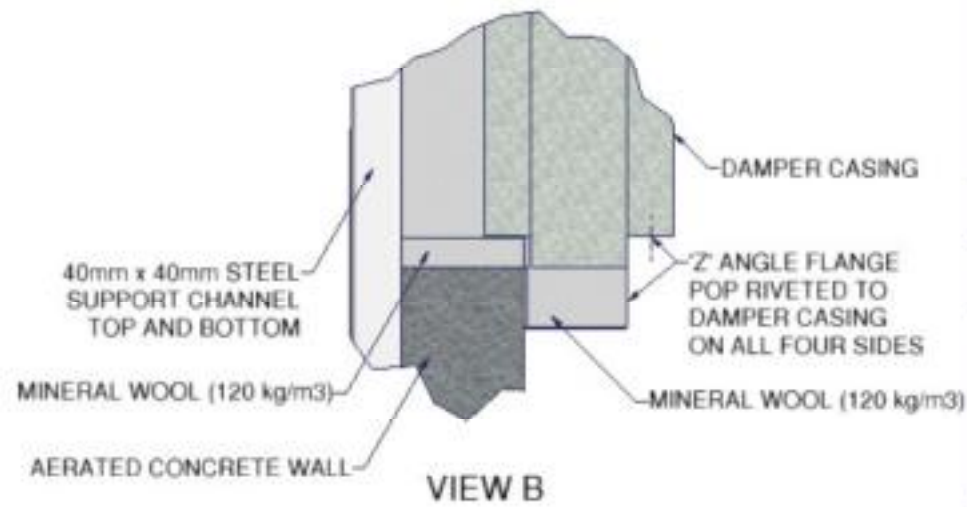
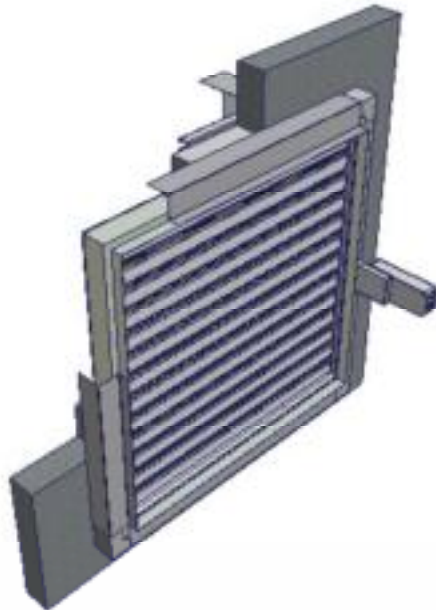
Procedure

- 1) The units should be carefully inspected and cleaned of dust and debris
- 2) The units should then be lubricated with a light oil, by wiping this over all the surfaces
- 3) The mode should be operated to ensure that it is moving the blades from open to closed and the reverse.
- 4) If the microswitches (in the mode) are being used, it should be checked that they are actually indicating that the blades are open or closed. This is done by running a cycle and checking both the blades (open and closed) and the indication that the microswitches are feeding back to.

actionair INSTALLATION DETAIL



VIEW A



VIEW B

IF YOUR PROPOSED INSTALLATION DETAIL DIFFERS FROM THAT SHOWN, PLEASE DISCUSS THIS WITH THE BUILDING CONTROL AUTHORITY (BCA) USING THIS DOCUMENT AND THE ASSOCIATED FIRE TESTS, ASSESSMENTS AND OTHER DOCUMENTS SHOWN BELOW, SO THE BCA CAN DECIDE WHETHER YOUR PROPOSED METHOD DIFFERS SUFFICIENTLY FOR IT TO BE UNACCEPTABLE TO THEM (THE BCA)

APPLICABLE TEST REPORTS - EN1366-2

STADT WIEN
MA39-VFA-2003-1851-01

BSEN13501-3 CLASSIFICATION

E90	ES90	E90S
-----	------	------

VERTICAL APPLICATION
SMOKE SHIELD
DAMPER SIZE:
1000mm (WIDE) X 1000mm (HIGH)