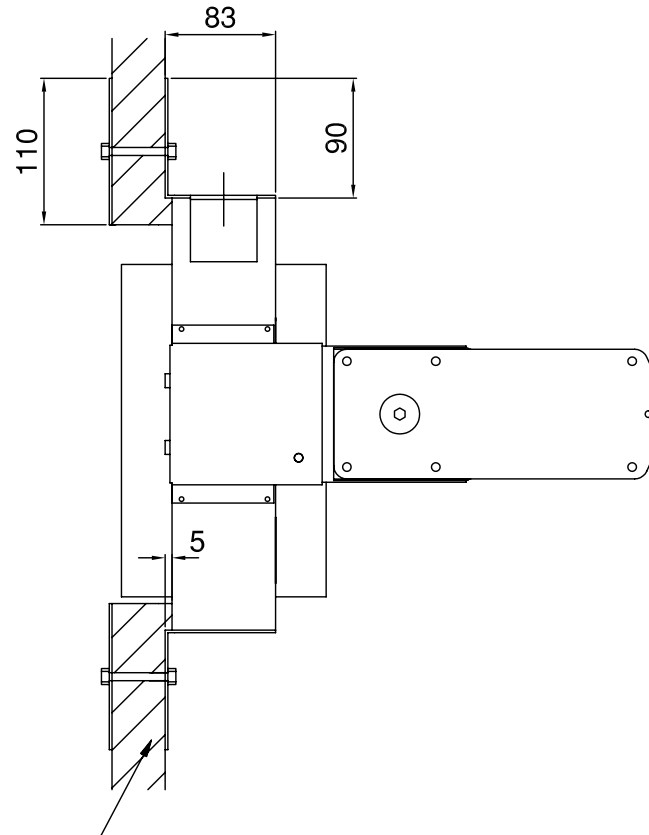
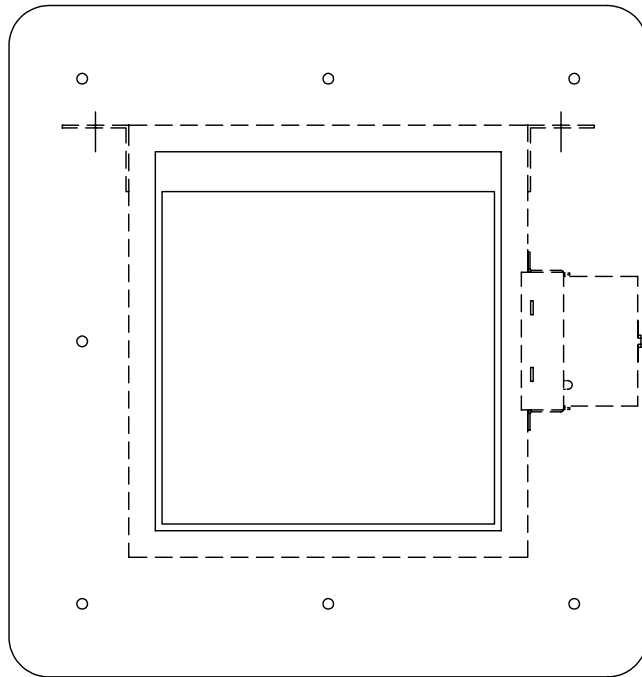


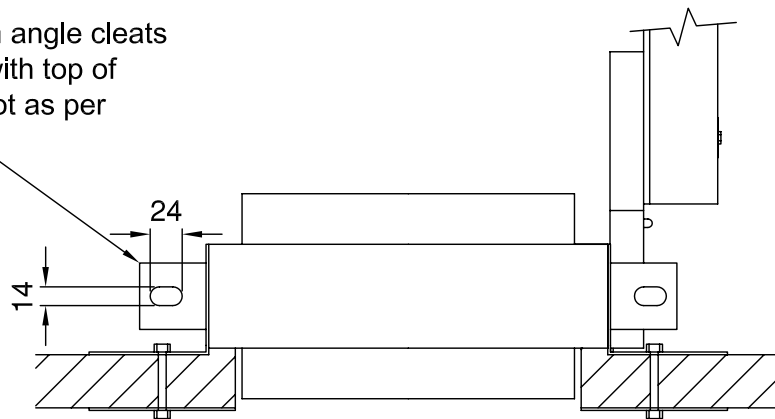
Suggested method of fixing Smoke/Shield P.T.C. dampers to a flexible smoke curtain.

actionair

©RUSKIN AIR MANAGEMENT LIMITED
 South Street, Whitstable
 Kent CT5 3DU
 Telephone: 01227 276100
 Facsimile: 01227 264262
 www.actionair.co.uk



50 x 50 x 3mm angle cleats welded flush with top of damper c/w slot as per AA/F0244



PLAN VIEW

Smoke Curtain "sandwiched" between both flanges. (Flanges supplied by Actionair and shrink wrapped to the main assembly for delivery purpose).

Note:

This arrangement shows our standard right hand mounted control mode, customer to advise control mode orientation if different.

Notes:

90 x 83 x 1.2mm Galv' angle flange welded to damper casing on all four sides with cut out to allow fitting of interface.
 (Refer to drawing AA/F9462 for flange welding detail)

5mm offset on non access face.

110mm wide 1.2mm Galv' undrilled flange supplied loose for fixing on site by others.

These flanges to be fixed together as shown by bolting at 100mm centres. (Nuts, bolts and fixing holes by others).

This arrangement is subject to local authority or district surveyor approval.

Rev	Change	Initials	Dates
B	25mm RETURN REMOVED FROM NOTES & CLEAT UPDATED	S.W.	24/01/2006
A	INFORMATION UPDATED	A.M.	12/02/2001
Drawn By		G.M.B.	03/06/1999
Checked By		S.W.	30/01/2006
Approved By		L.M.	30/01/2006
Customer		.	
Project		.	

Title
 GENERAL ARRANGEMENT FOR FIRE/SHIELD SMOKE CURTAIN ACCESS SIDE

Drawing No.	Revision
AA/F 6021	B