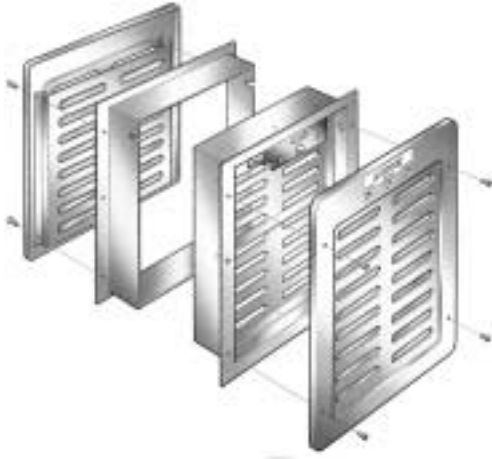


## Product Data Sheet TRS-1&amp;2 /06-00



# Actionair

## Trans/Shield Modes 1&2

Stainless Steel Sliding Plate Fire Dampers

### Application

**The Trans/Shield Modes 1 & 2 stainless steel sliding plate fire dampers are designed for air transfer applications through fire rated doors and dry wall partitions.**

### Features and Design Guide

External manual release, resetting and testing facilities.

External visual indication of damper status.

Choice of two interchangeable and replaceable release and reset mechanisms with either manual (Mode 1) or manual and 24 Volt D.C. electro magnet release (Mode 2).

Fail-Safe Fusible Link and spring instant closure.

Five sizes available complete with specially designed matching non vision transfer grilles with radius edges and countersunk fixing.

### Approvals

Product Conformity awarded by The Loss Prevention Certification Board Limited.

Certificate No. 017a/03.

Fire tested (2 hour rating)

Fire Insurers Research and Testing Organisation.

Dampers Designed and Built in Britain  
Patent Nos. Pending

### Introduction

The Trans/Shield Damper complete with 18 gauge stainless steel flanged backing sleeve and matching Transfer Grilles can be readily accommodated in half-hour fire rated 44mm thick and 1 hour fire rated 54mm thick doors as well as fire rated dry wall/partitions.

### Specification

The Trans/Shield Dampers comprise of flanged 18 gauge stainless steel Sliding Seal and Static Damper Plates with horizontal perforations to provide, whilst the Seal Plate is in the open position, a free area of not less than that of the matching Transfer Grilles, for the passage and transfer of ventilation air in either direction. The Damper Sliding Seal Plate fail-safe to the instant closed position, either by the melting and parting of an attached Fusible Link at a temperature of 72 °C, or the functioning of the relevant Release and Reset Mechanism to maintain integrity and not permit the passage of flame when exposed to the time/temperature curve of BS476 Part: 20 1987 for a period of two hours.

Both Damper Plates together with a removable Release and Reset Mechanism Cassette are housed within an 18 gauge stainless steel slimline Damper Casing having integral flanges with prepunched fixing holes.

The Cassette has screw fixing for ease of attachment to and withdrawal

from the Damper Static Plate without disturbance to the Damper and recessed from view but readily accessible, a Release Lever and Resetting Shaft, both manually operated, and a spring loaded Damper Set and Status Pin which in the exposed position to provide visual indication of Damper status. The Cassette contains either of two interchangeable and replaceable Release and Reset Mechanisms.

### Control options

#### Control Mode 1 Manual Release

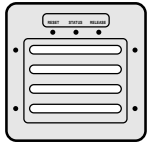
Fusible Link shall actuate the instant closure of the Damper due to an abnormal rise in temperature.

#### Control Mode 2 Manual and Electro Magnet Release

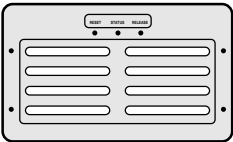
A 24 Volt D.C. Electro Magnet shall actuate the instant closure of the Damper when the electrical supply is interrupted, either as a function of a Smoke Detector System or due to failure of the electrical supply and in both events, before the operation of the Fusible Link due to an abnormal rise in temperature or a full fire condition occurs.

Each Trans/Shield Damper is complete with 18 gauge stainless steel flanged backing sleeve and a pair of specially designed matching non vision Transfer Grilles with radius edges, countersunk fixing holes and constructed in 18 gauge galvanised mild steel finished in Polyester Powder coat to RAL 8025 gloss brown.

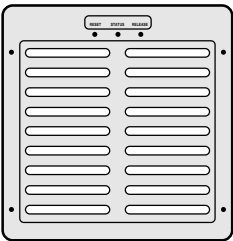
The Trans/Shield dampers are suitable for vertical application only, with the passage and air transfer of ventilation air in either direction. For details regarding Pressure Drop/Acoustic Performance, Installation and Dimensional data, please refer to Customer Service Office.



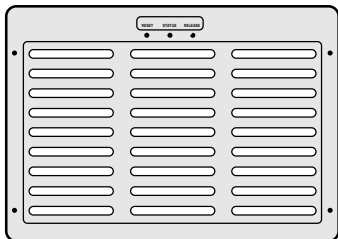
Size 160 x 160



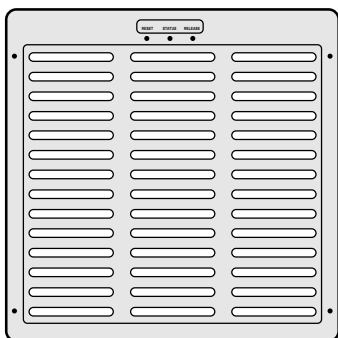
Size 310 x 160



Size 310 x 300



Size 450 x 300

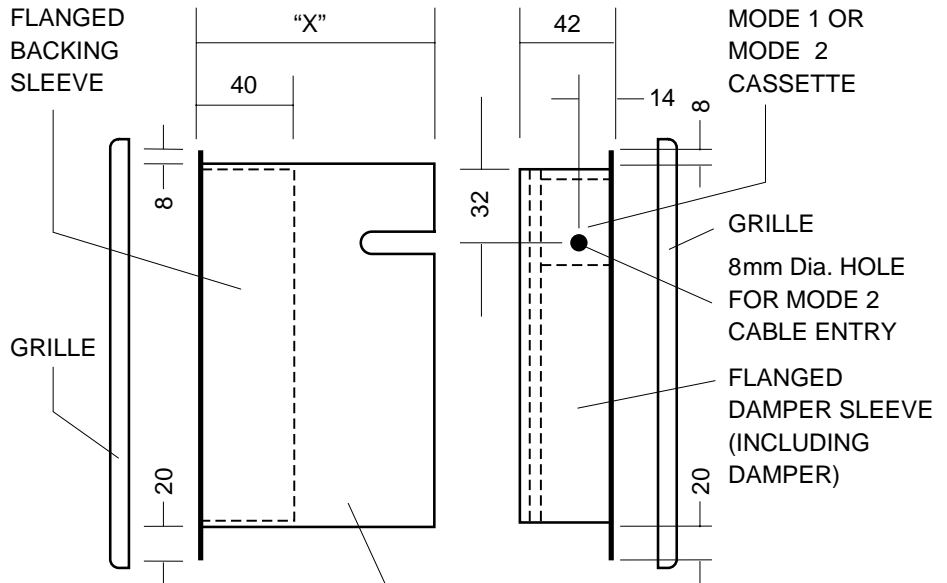


Size 450 x 430

Cutting Hole Size W x H	Grille O/A Size W x H	Effective Free Area m <sup>2</sup>	Damper (Including Grilles) Approx Weight Kg
160 x 160	195 x 190	0.007	3.0
310 x 160	345 x 190	0.014	4.0
310 x 300	345 x 330	0.028	6.0
450 x 300	485 x 330	0.042	8.0
450 x 430	485 x 460	0.063	11.0

### Trans/shield Mode 1 & 2 Damper complete with Extended Wall Sleeve

#### SIDE ELEVATION



SPECIAL EXTENDED WALL SLEEVE OF 18 GAUGE STAINLESS STEEL FACTORY FITTED TO STANDARD TRANS/SHIELD FLANGED DAMPER SLEEVE

#### Extended Wall Sleeve

Standard units are suitable for thickness 42mm to 80mm.

Wall sleeves are required for greater thickness.

With this sleeve arrangement, Dimension "X" can vary according to wall thickness, from 81mm up to a maximum of 300mm. **Please advise Dimension "X"**.

# actionair



South Street, Whitstable,  
Kent CT5 3DU England  
Tel: (01227) 276100  
Fax: (01227) 264262  
International Code: +441227  
Email: sales@actionair.co.uk  
Website: www.actionair.co.uk

For further information, please refer to the Actionair Trans/Shield product catalogue or contact our Customer Service Office.

The information contained herein is subject to change without notice due to continuing research and development